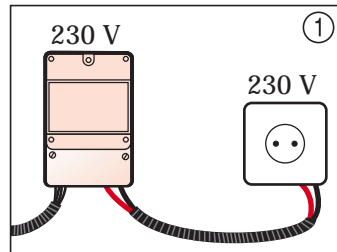
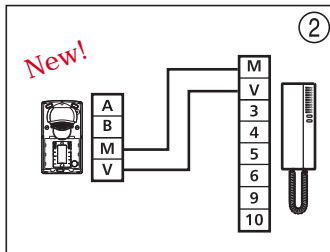


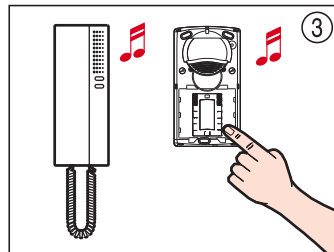
Checking



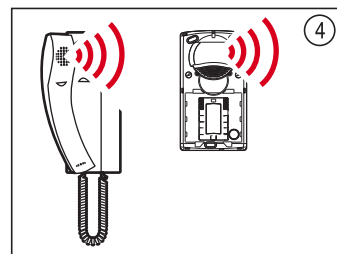
Correct connection to the mains.



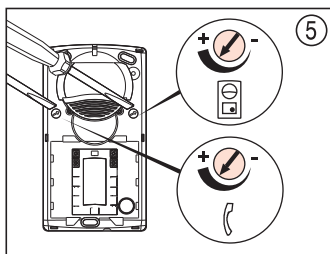
Automatic connection test. When the telephone is put back or the connection is wrong, the chimes are continuous.



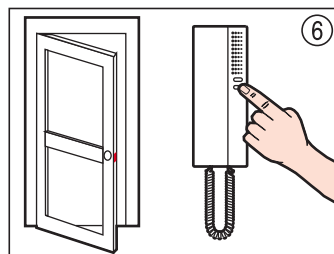
Press the button, the chimes ring at the telephone and the outdoor unit.



Volume of the telephone and outdoor unit OK.

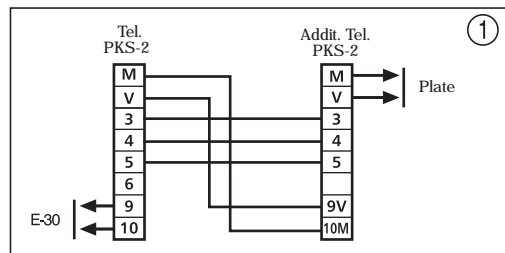


Adjust the volume of the telephone and outdoor unit.

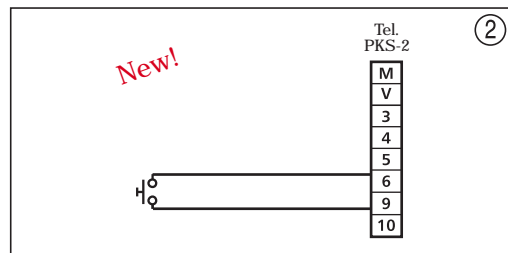


Check the door opening.

Accessoires



Installation of an additional telephone.



Add a new one-tone chime different than the entry door.

Troubleshooting

1. Nothing operates.

Check on the E-30 that the voltage across terminals 9 and 10 is about 12 V AC and 230 V AC at the MAINS. If a short-circuit is detected, repair it. Cut off the mains power and all the wires from the power supply for a few minutes. Connect and check the mains voltage.

2. The lighting of the label-holder face does not operate. Check at the outdoor unit that the voltage across terminals V and M is about 7 V DC, that the lighting jumper is installed and that the telephones are put back. If the voltages are correct, then the outdoor unit is faulty.

3. Continuous chimes.

Check the polarity of the connections at terminals V and M.

4. The latch does not work.

Check at the outdoor unit that the voltage across terminals A and B is 12 V AC, ditto for terminals V and M. If the voltages are correct, then the latch is damaged.

Installation instructions for 2 wires audio kit 3757 70



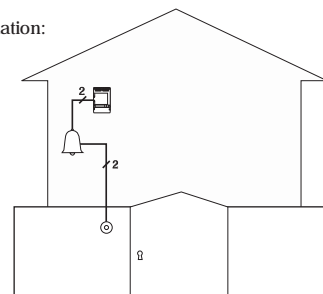
REF.: 2678 Rev. 0

Description

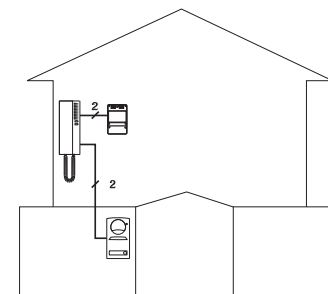
Door entry phone kit with two wires for one dwelling. Easy installation. Simple door bell change for automatic entry phone without rewiring.

Standard installation:

Door bell

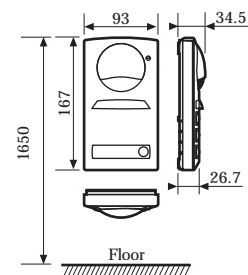


New 2 wires audio kit



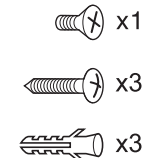
Kit items

Series 7 outdoor unit
Cat. No.: 3757 79

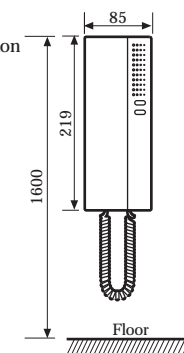


Packaging includes:

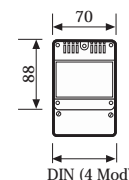
1 Philips closing screw 4x8 mm.
3 Philips clamping screw 3.9x25 mm.
3 Fischer wall plugs 5x25 mm.



Series 7 telephone
Cat No.: 3740 10. Installation
with two wires, two-tone
electronic chimes.



E-30
230 V AC, DIN rail mounting
(4 modules)



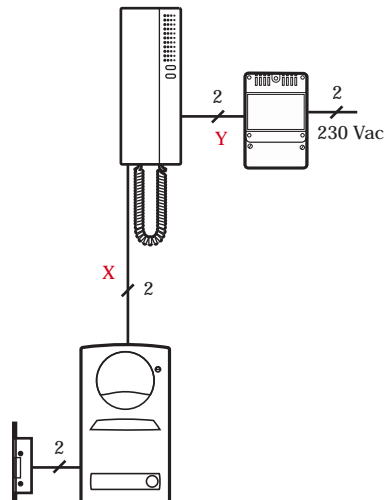
Latch
(not included in the kit),
characteristics:
12 V AC max. 880 mA \pm 5%



System operation

When the outdoor unit button is pressed, the call rings in the dwelling, and also at the outdoor unit. This is referred to as call confirmation at the outdoor unit. The electronic chimes have two tones. A second one-tone chime can be added and an additional telephone. From the dwelling, you can reply to the call and open the door using the telephone latch button . The kit includes an automatic connection test that rings continuously when the wiring is wrong. The outdoor units do not have to be flush-mounted and their innovative design simplifies mounting and increases reliability by improving the weatherproofing of the system.

Single wire diagram



Recommended cross-sections

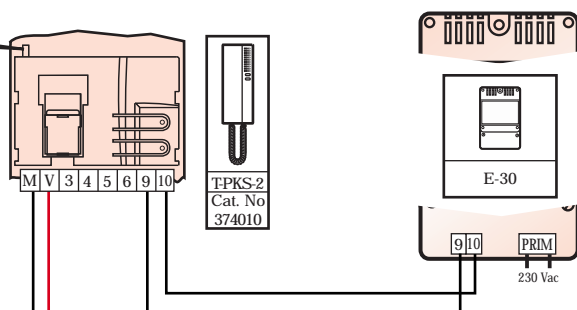
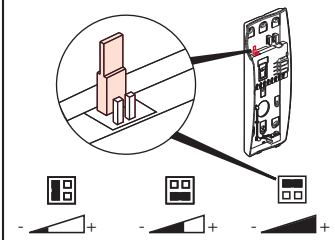
Connections		Number of wires	Minimum cross-sections (mm ²)		
			Y 25 m	Y 50 m	Y 100 m
9, 10		2	0.5	1	2.5

Connections		Number of wires	Minimum cross-sections (mm ²)	
			X+Y 50 m	X+Y 100 m
V, M		2	0.5	1

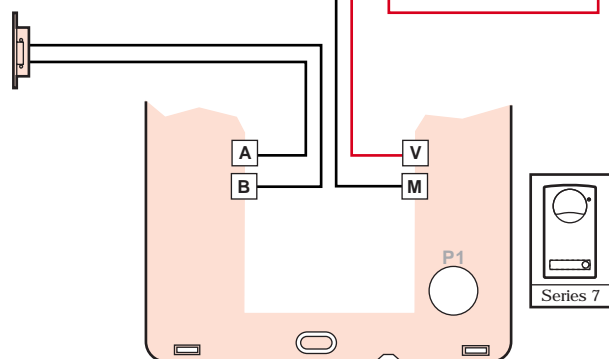
Installation diagram

Volume of chimes

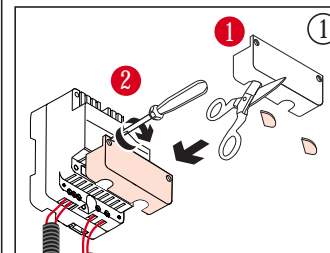
The volume of the telephone chimes can be adjusted using the bridges at the top of the terminal cover.



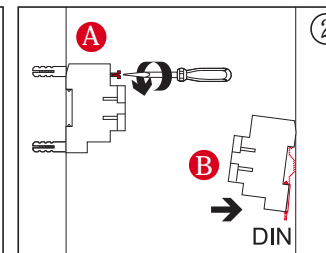
Wires wrongly polarised.
Continuous call.



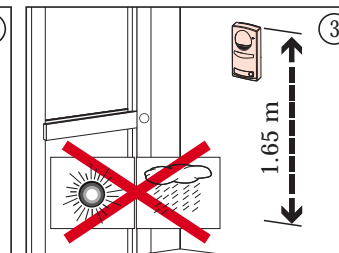
Installation



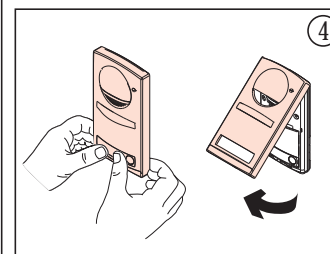
Cut the "grommet" and close the cover of the power supply connection.



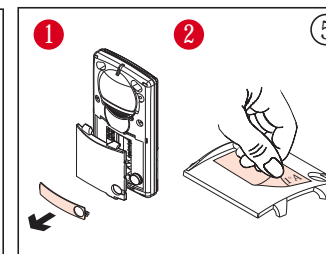
Fix on to the wall or DIN rail.



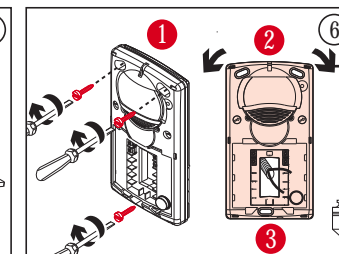
Install the sheltered outdoor unit near the door.



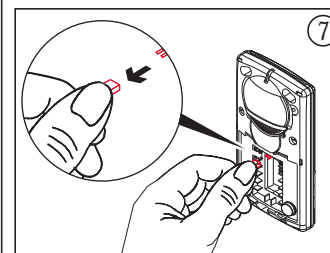
Tip to free the outer box.



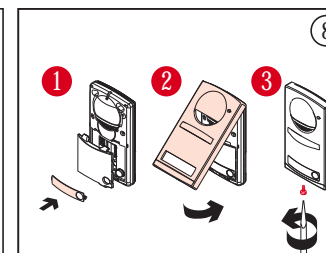
Remove the label-holder plate to clear the terminals. Attach the relevant label.



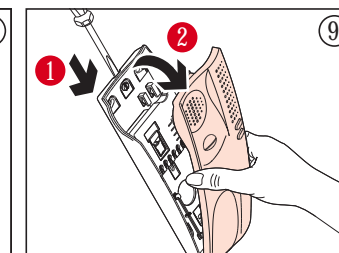
Fix the levelled plate using the screws and plugs supplied in the kit. Make the connection.



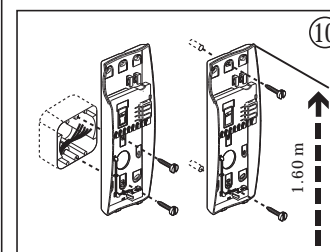
Remove the bridge if you do not want lighting.



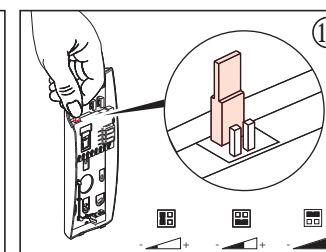
Install the label-holder plate, tip and close the plate using a screw included in the kit.



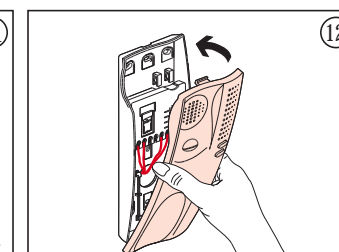
Opening the telephone.



Fix on to the universal box or wall at the recommended height.



Adjust the volume of the telephone chimes using the various bridge configurations (see page 2).



Engage the clip and close the telephone.